

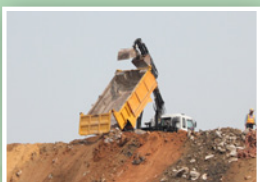
環保園內的建築廢料和玻璃廢料回收再造過程

Recycling Processes of C&D Waste and Waste Glass in EcoPark

收集 Collection

收集再造材料和玻璃：與非政府組織合作回收玻璃廢料、「Life Paving Programme」回收廢棄路面磚、建築地盤或毗鄰的公眾堆土區回收建築廢料。

Collection of recycled aggregate and glass: waste glass from NGOs, waste pavers from the "Life Paving Programme"; C&D waste from construction sites or adjacent Public Filling Area.



貯存再造材料於堆料區
Storage of recycled aggregate at stockpile area

處理 Processing

裝卸回收材料及玻璃廢料到破碎機系統，打碎成合要求體積，然後經輸送帶運往混凝土攪拌站。

Loading recycled aggregate and waste glass into automatic crushing and screening system and crushing them into required size, then feeding into the conveyor of concrete mixing plant.



於混凝土攪拌站攪拌再造材料和其他原材料（水泥、混合劑、顏料等等），製成混凝土。

Mixing the recycled materials with other raw materials (cement, water, admixtures, pigments, etc.) as concrete in mixing plant



傾注混凝土至製磚機定型，製造環保磚。

Pouring concrete into block machine for molding into eco-blocks/pavers

輸送環保磚至養護區進行天然養護和風乾

Delivering eco-blocks/pavers to curing chamber for natural curing and drying



輸送環保磚至碼堆機進行包裝以及運送至裝運區

Delivering eco-blocks/pavers to cubing machine for packing and transport to stockyard



回收再造產品 End Products

以載貨車運送環保磚至客戶們的選址

The eco-blocks/pavers shall be delivered to clients' site by crane trucks.

環保磚的種類：

Types of eco-blocks/pavers:



再生玻璃牆磚

Trans Glass Blocks



再生玻璃路面磚

Trans Glass Pavers

