

環保園內之廢金屬回收再造過程

Recycling Processes of Waste Metals in EcoPark

收集 Collection



客戶用大型卡車運送廢鋼到眾裕場地
Individual scrap collectors from different districts utilize large trucks to deliver their goods to CY Steel

廢鋼原材料來源包括家居廢鋼、建築廢鋼以及工業廢鋼。
Raw material collected are from a large variety of sources: household electronic wastes, construction sites, industrial wastes, etc.



未加工家居廢鋼
Unprepared steel scrap from households



未加工建築及工業廢鋼
Unprepared construction and industrial steel scrap

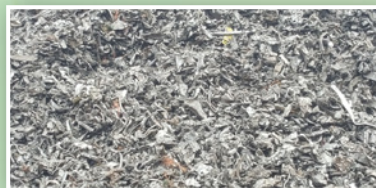


處理 Processing



廢鋼粉碎生產線把廢鋼打成粉碎料，以作為煉鋼原材料。

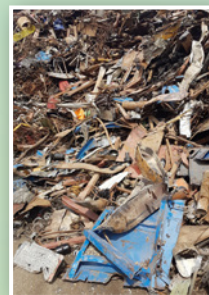
The value-added scrap metal shredding system turns the scrap metal to finished products, as feedstock to manufacture other metal products.



加工好的粉碎料
Shredded steel scrap



電動剪斷機
The shearing machine



剪切加工後廢鋼
Sheared steel scrap



處理好廢鋼裝入貨柜，以運送給國際買家
Processed Scraps are loaded onto containers for international cargo shipping



抓鋼機處理廢鋼以及打堆
Excavator sorting collected scraps and stockpiling shredded and refined products



散裝船直接停泊眾裕環保園碼頭，等待裝貨
Bulk vessel berth at the EcoPark Wharf, ready to load processed scrap to international destinations



粉碎料裝入散貨船，運往國際買家
The shredded scraps are loaded onto bulk vessels, to ship to overseas buyer for use



已加工廢鋼裝入船艙：包括粉碎料 (ISR1 211 以及 HMS 1/2 80/20)
Finished product Shredded (ISR1211) and HMS 1/2 80/20 loaded into bulk vessel.